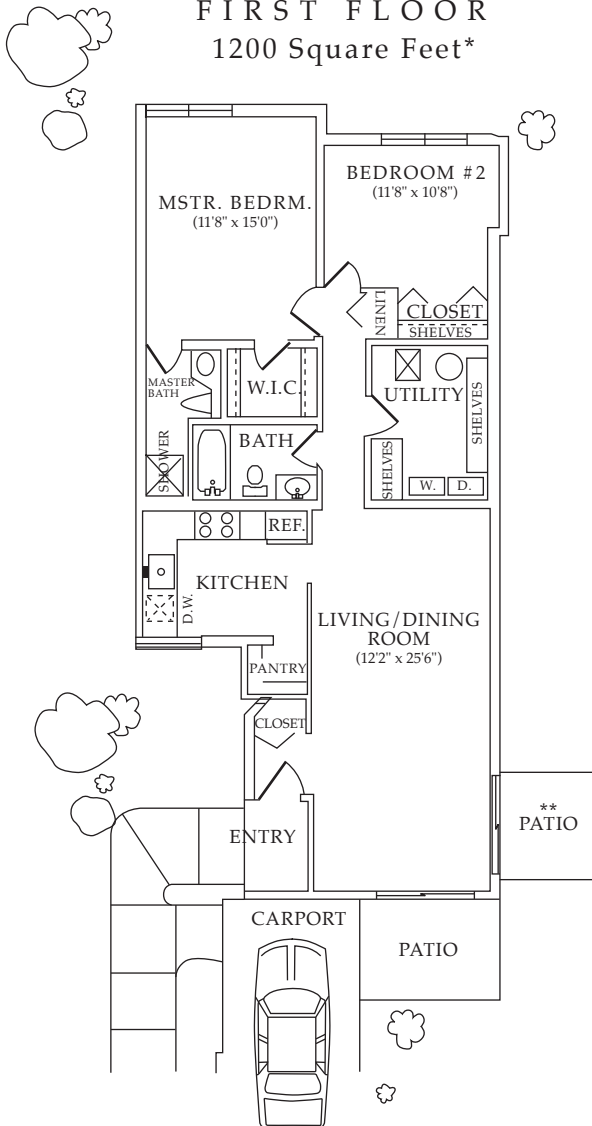


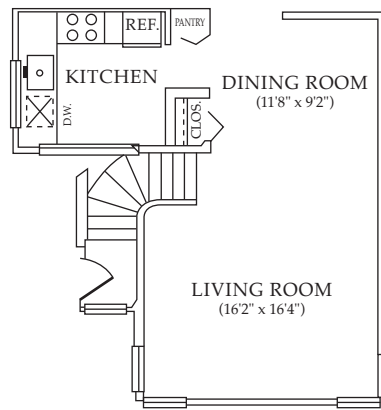
THE ASHTON

Two-Bedroom, Two-Bath Terrace Home

FIRST FLOOR 1200 Square Feet*



SECOND FLOOR 1250 Square Feet*



* Floorplan dimensions and room sizes may vary.
Ask your leasing consultant for details.
** Corner location only

One of Muirwood's most sought-after designs, The Ashton provides an incredible combination of flexibility, living space and privacy.

Highlights include:

- Through unit design
- Oversized living and dining room with large picture windows
- Expansive dine-in kitchen with a window for added natural lighting
- Spacious master suite with walk-in closet and roomy bath area
- Large interior utility/storage room with full-sized in residence washer and dryer
- Direct private entrance with enclosed stairway
- Private, attached covered parking
- Expansive private covered patio on first level plan only

MUIRWOOD

TERRACES & APARTMENTS

