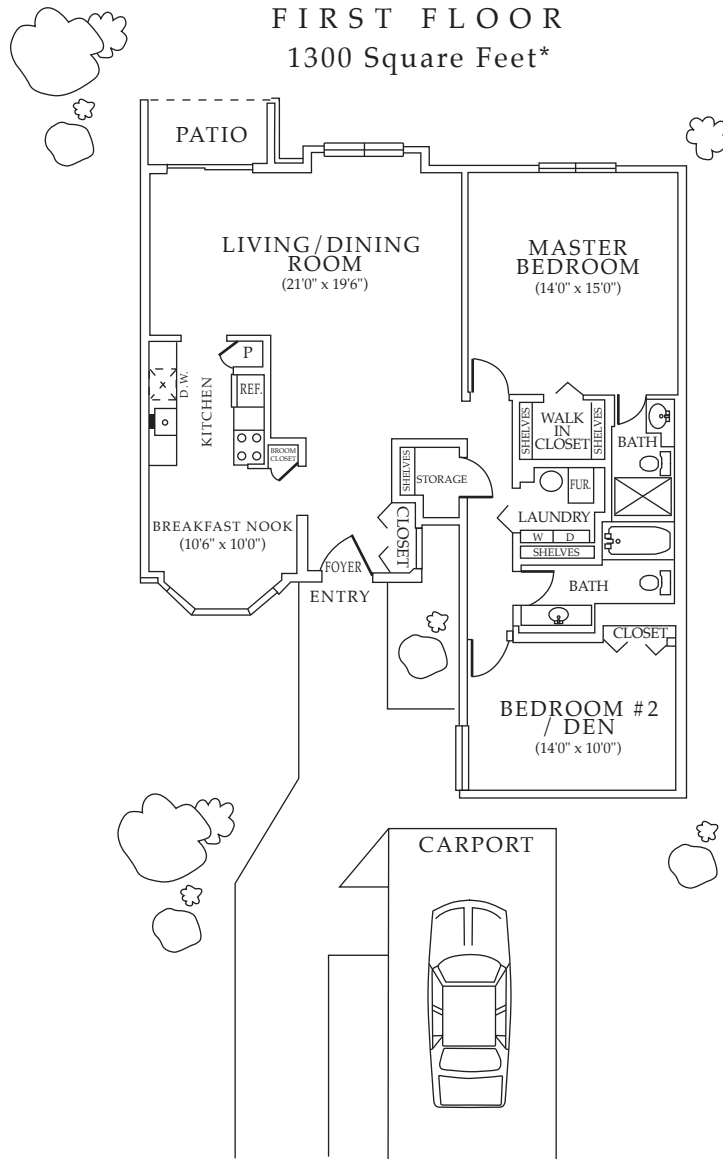


# MUIRWOOD

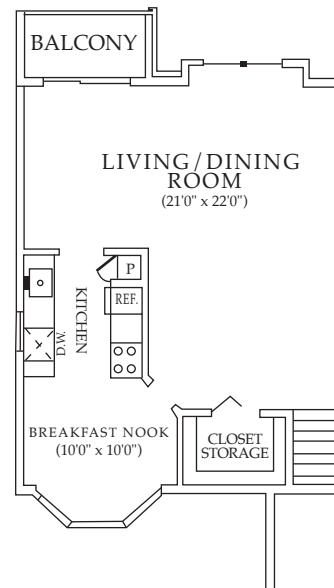
## TERRACES & APARTMENTS

### THE KINGSLEY

Two-Bedroom, Two-Bath Terrace Home  
(available on 1st or 2nd floor)



**SECOND FLOOR**  
1300 Square Feet\*



\* Floorplan dimensions and room sizes may vary.  
Ask your leasing consultant for details.

Muirwood's most spacious and luxuriously designed floorplan, The Kingsley presents all the features of a fine private residence with the convenience and amenities unique to Muirwood.

Highlights include:

- Through unit design
- Expansive living/ dining area with large picture window and a private covered patio/ balcony
- Oversized dine-in kitchen with beautiful bay window and lots of natural lighting
- Graciously designed bedroom suites with ample closet space
- Double exposures and numerous windows for abundant natural light
- Private, direct front entrance with a dramatic enclosed stairway
- Full-sized in residence washer and dryer
- Designated covered parking

# MUIRWOOD

## TERRACES & APARTMENTS

