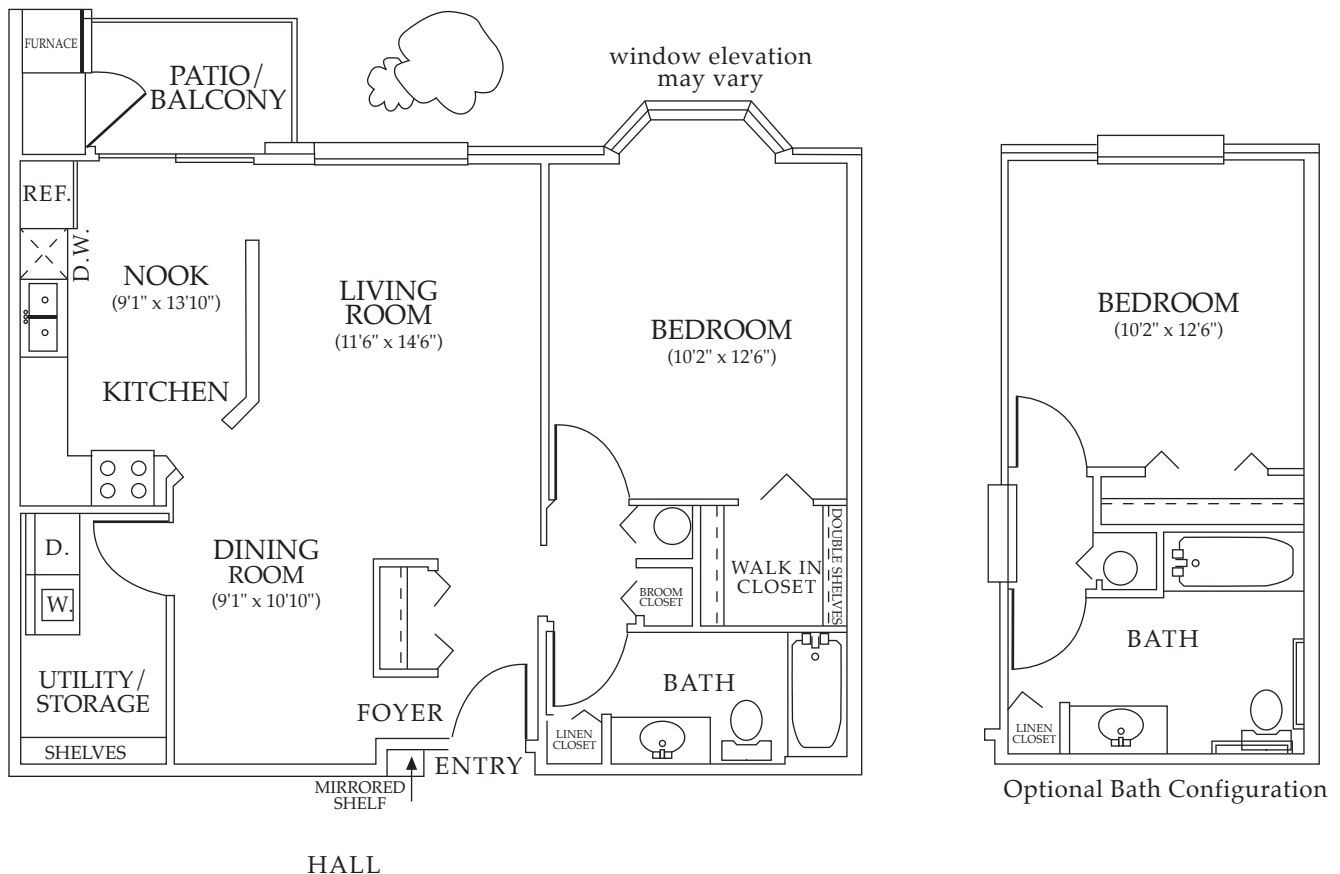


The Enclave

at MUIRWOOD 

THE LEXINGTON
 One Bedroom, One Bath
 900 Square Feet*



* Floorplan dimensions and room sizes may vary.
 Ask your leasing consultant for details.

A beautifully designed one-bedroom apartment with abundant natural light and unique design features that make living at The Enclave as enjoyable as it is beautiful.

Highlights include:

- Sumptuous lobby / club entrance
- Spacious living room with large windows and lots of wall space
- Large dine-in kitchen with breakfast nook and sliding door to private patio / balcony
- Half-bay window in master suite on all balconies
- Walk-in storage closet that works perfectly as a separate computer den
- Full-sized in residence washer and dryer
- Textured walls and popcorn ceilings
- Private covered parking
- Elevator access

The Enclave

at MUIRWOOD 

MUIRWOOD ENCLAVE

The newest addition to the Muirwood Community

It is our pleasure to present to you Muirwood's Enclave, a reserve community that sets a new standard for luxury and innovative rental living.

This community consists of only two three-story buildings and each is nestled beautifully into the surrounding woodlands. The buildings themselves are patterned in the style of an elegant hotel with refreshment bars and comfortable sitting areas in the lobbies, indoor mail rooms and elevator service. Likewise, the corridors to the apartments are extra wide and each apartment has its own foyer ledge and mirror outside the door for an added touch of personality.

Since its opening, the Enclave has enjoyed one of the highest demands of any rental property in Oakland County. If you have an interest in these oversized and innovative rental accommodations, we urge you to select your location today.

ENCLAVE RESIDENCE FEATURES:

- Oversized windows provide panoramic views of the Enclave's scenic setting the moment you enter
- Exceptionally large kitchens with excellent lighting and plenty of dining space
- Private patios and balconies enabling you to enjoy the natural beauty of your surroundings
- Spacious living rooms and dining areas that are ideal for entertaining guests
- Entry foyers with spacious coat closets
- Double-hung closets for added storage capacity
- Walk-in laundry and storage rooms
- Designer coordinated cabinetry and flooring
- General Electric appliances, including in residence full-sized washers and dryers
- Convenient entry counter beside each residence's door
- Steel fire-rated entry door with dead-bolt locking system
- Personal intrusion alarm in each residence

ENCLAVE COMMUNITY FEATURES:

- Limited community size to create a comfortable "at home" ambiance
- Two-story atrium and a gracious "hotel-styled" lobby in each building
- Centrally located elevator service in each lobby
- Elegant, spacious and well illuminated corridors
- Canopied exterior entry; electronically controlled
- Central indoor mailroom (larger packages accepted in the office)
- Optional/additional storage facilities on premises
- Convenient to downtown Farmington and Twelve Oaks Mall
- Walking distance to Muirwood Square, Rite-Aid Pharmacy and Busch's Gourmet Grocery Store
- Free membership to Muirwood Health Club with complete social programs
- Limited concierge-style services
- Minutes from I-96, I-696 and I-275

The Enclave

at MUIRWOOD 