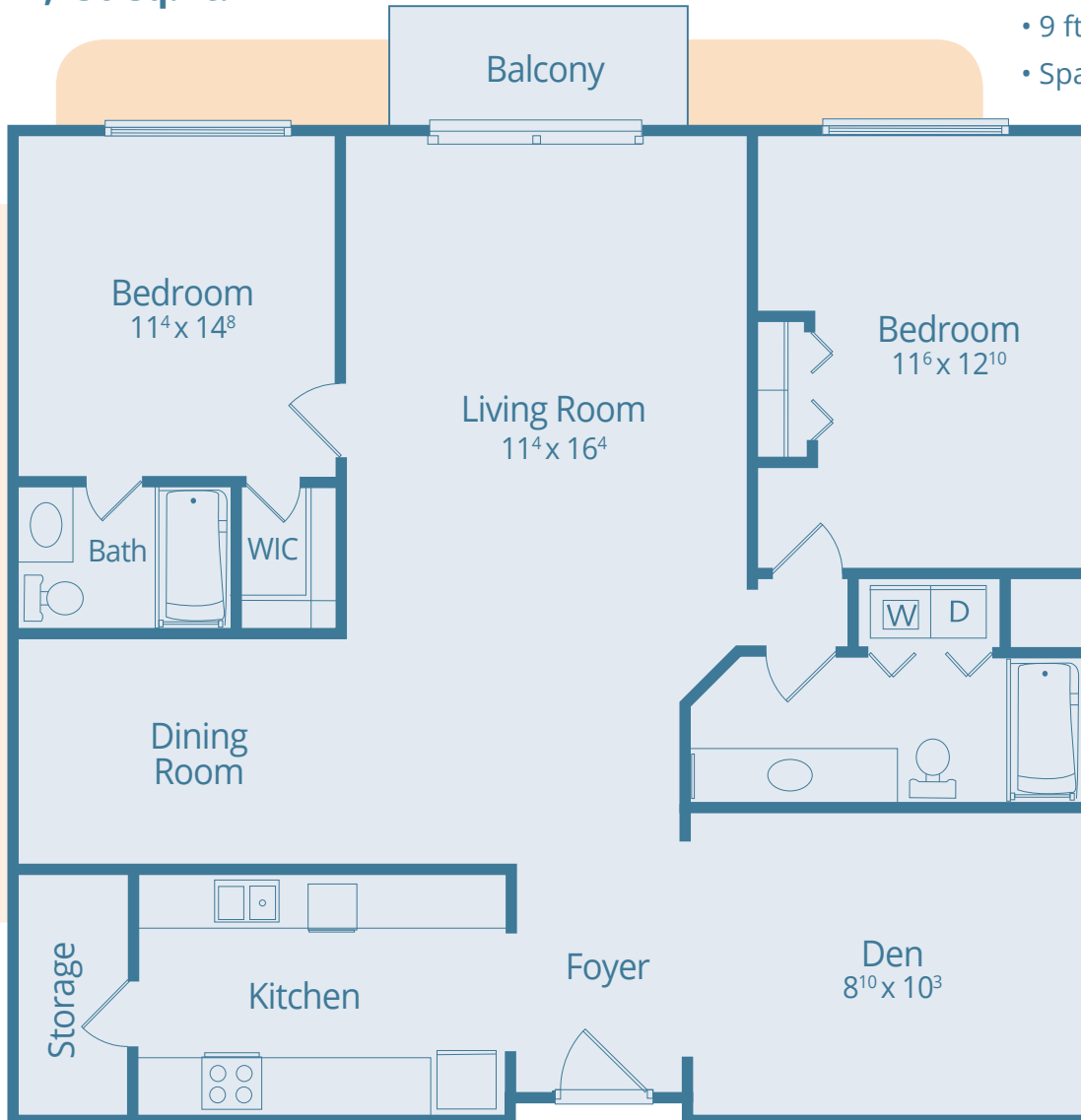


The Park City 2

FEATURES

*The Park Beach floor plan is the same layout but does not include the Den, shown here

2 bedroom, 2 bath
1,250 sq. ft.



- Through-unit design enhances cross-ventilation and natural light
- Controlled access and elevator building
- 9 ft. ceilings
- Spacious balcony
- Full size washer and dryer
- Oversized windows
- Intrusion alarm
- Built in microwave
- Abundant storage



Uptown
IN CANTON
apartment living
Upbeat. Upscale. Uptown!

49730 Uptown Ave.
Canton, Michigan 48187
Phone: (734) 495-9500
UptownApts.com

*Illustrations and dimensions are approximate. Beztak Properties reserves the right to revise design, specifications, materials, price and terms without notice or obligation, and the right to change or discontinue modes. © 2014 Beztak Properties.

